



NORDIC ID MUX16



Nordic ID MUX16 extends the RFID reading zones of the Nordic ID FR22, from 4 to 16. Nordic ID MUX16 is fully integrable with Nordic ID FR22 working as one piece without any additional cables.

RF FEATURES

Frequency band	Wide band 865 MHz – 928 MHz
RF ports	16 pcs
Connector type	RP-SMA
Maximum insertion loss	1 dB

POWER AND DATA OVER COAX

Voltage levels	3V to 6V in 1V steps (4 states)
Maximum output current	1mA

SIZE AND WEIGHT

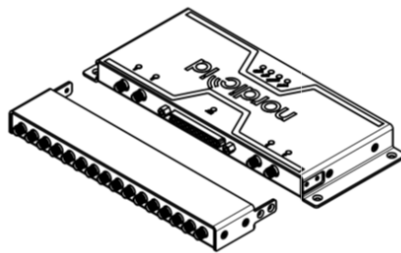
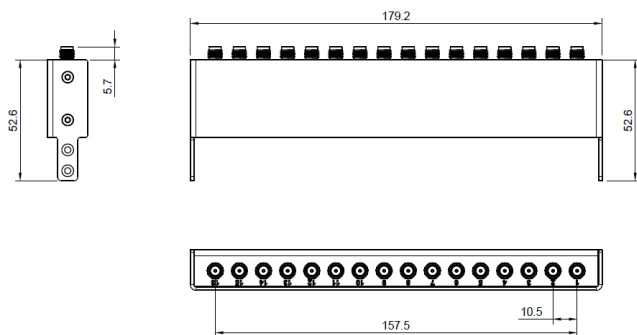
Dimensions	(W) 179.2 x (L) 52.6 x (H) 17.6 mm / (W) 7.05 x (L) 2.07 x 0.7 inch
Weight	260 gr / 9.17 oz

ENVIRONMENT

Operating Temperature	-20°C to 55°C (-4°F to 130°F)
Storage Temperature	-40°C to 85°C (-40°F to 185°F)
Environmental Sealing	IP20

All information is subject to change without prior notice.

*Depending on environment lighting condition and reflectivity of the object in question



PRODUCT HIGHLIGHTS

- Very low losses providing better overall efficiency.
- Unique power + data interface over coax.
- Fully integrable with Nordic ID FR22.
- Ready to use with NUR API.

SUITABLE APPLICATION AREAS

- Smart shelves
- RFID gates
- RFID tunnels